

TO A LOW EMISSIONS ECONOMY



This presentation will cover

- What we mean by a Just Transition
- The role of the Just Transitions Unit – our focus and approach
- The work programme
- How this fits with Future of Work (and MfE work)



What we mean by a Just Transition

A **Just Transition** is about:

- **Partnering** between government, Māori, business, the workforce, and communities to:
 - Build an understanding of the potential pathways to transform our economy (to one that is low emissions);
 - Identify, create and support new opportunities, new jobs, new skills and new investments that will emerge from the transition; and
 - Better understand how the transition might impact on different communities, regions or sectors and make choices about how we manage these impacts in a just and inclusive way.



Our focus – On a transition to a low emissions economy

A broad range of factors will impact on New Zealand's transformation over the next 30 years, including our response to climate change, technological development and the future of work.

We are focusing our just transition work on the pathways, partnerships and decisions that **support a just transition to a low emissions economy.**



TO A LOW EMISSIONS ECONOMY



This presentation will cover

- What we mean by a Just Transition
- The role of the Just Transitions Unit – our focus and approach
- The work programme
- How this fits with Future of Work (and MfE work)



What we mean by a Just Transition

A **Just Transition** is about:

- **Partnering** between government, Māori, business, the workforce, and communities to:
 - Build an understanding of the potential pathways to transform our economy (to one that is low emissions);
 - Identify, create and support new opportunities, new jobs, new skills and new investments that will emerge from the transition; and
 - Better understand how the transition might impact on different communities, regions or sectors and make choices about how we manage these impacts in a just and inclusive way.



Our focus – On a transition to a low emissions economy

A broad range of factors will impact on New Zealand's transformation over the next 30 years, including our response to climate change, technological development and the future of work.

We are focusing our just transition work on the pathways, partnerships and decisions that **support a just transition to a low emissions economy.**



Just Transition Unit Work Programme

Our initial focus will be on three key **themes** which will help build a Just Transition approach into our climate change work:

1. Partnership

- **Effective partnering with Taranaki to assist with the region's transition**
- Effective partnering with the food processing sector to assist the sector's transition

2. Shared vision

- **Planning for a National Just Transition Summit (hosted in Taranaki, second quarter 2019)**

3. Policy coherence and alignment

- Coordinating economic advice into key climate change policy processes
- Developing an evidence base to better understand the distributional impacts of major climate change policy decisions on – the regions, sectors and communities most likely to be affected by transition-related decisions
- Working with other government agencies to ensure a just transition lens is used in the development of policy and operational work



Just Transition Unit Work Programme

Our initial focus will be on three key **themes** which will help build a Just Transition approach into our climate change work:

1. Partnership

- **Effective partnering with Taranaki to assist with the region's transition**
- Effective partnering with the food processing sector to assist the sector's transition

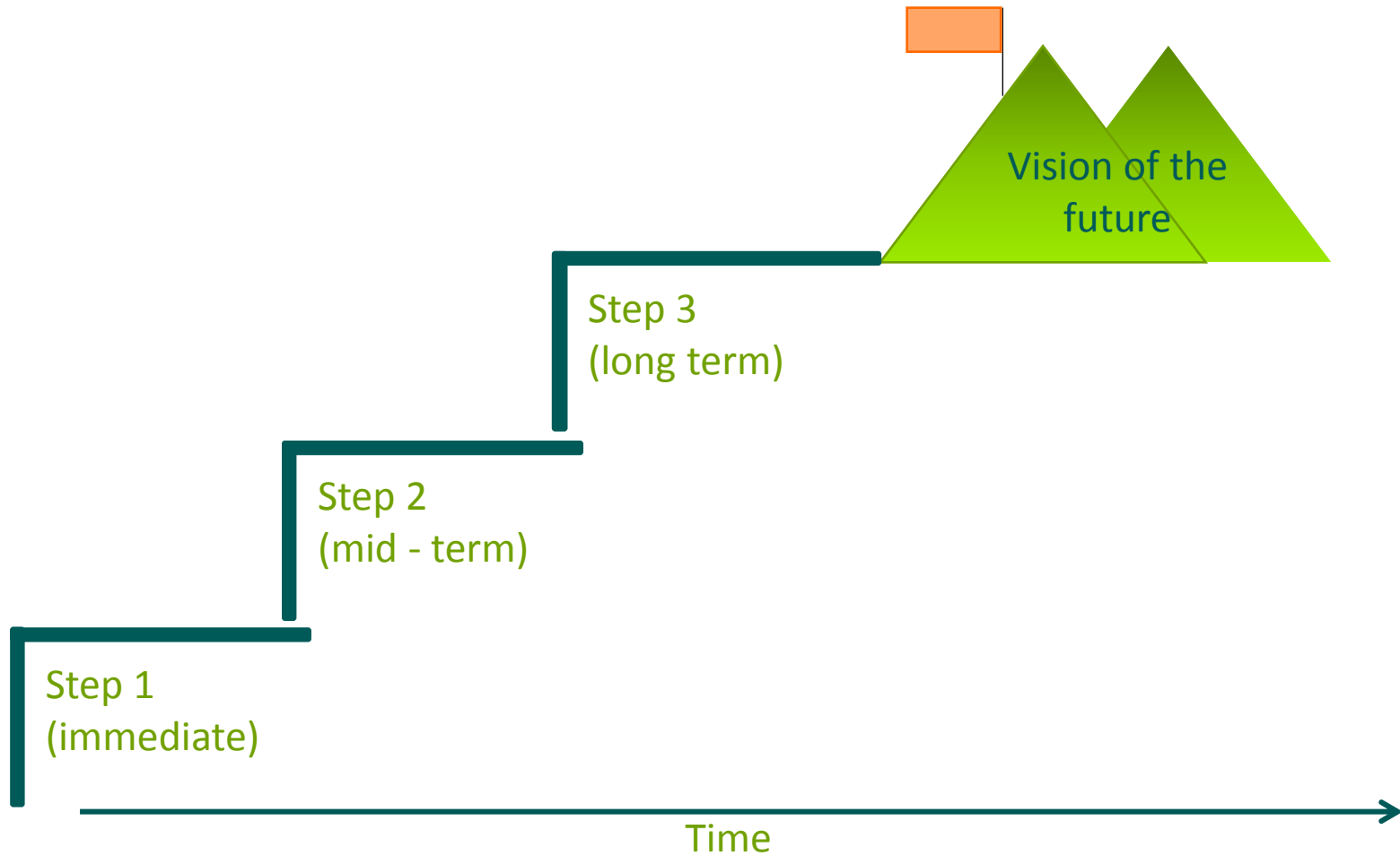
2. Shared vision

- **Planning for a National Just Transition Summit (hosted in Taranaki, second quarter 2019)**

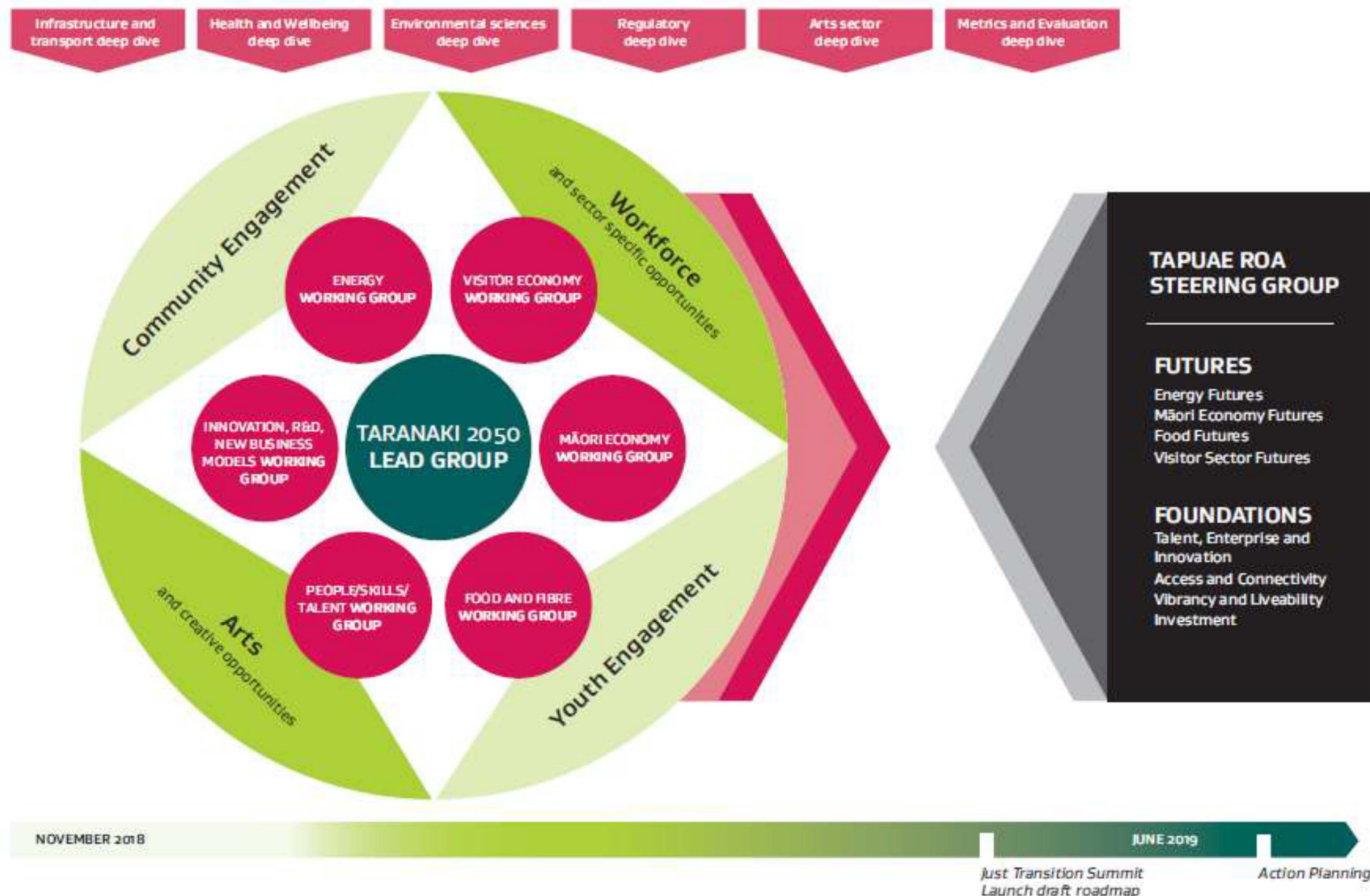
3. Policy coherence and alignment

- Coordinating economic advice into key climate change policy processes
- Developing an evidence base to better understand the distributional impacts of major climate change policy decisions on – the regions, sectors and communities most likely to be affected by transition-related decisions
- Working with other government agencies to ensure a just transition lens is used in the development of policy and operational work

Taranaki Just Transition Roadmap



TARANAKI 2050 TRANSITION ROADMAP Development Process



Just Transition Unit National Summit

The Just Transition National Summit provides a platform for a national conversation about what a Just Transition to a low emissions future is and what it will look like for New Zealand.

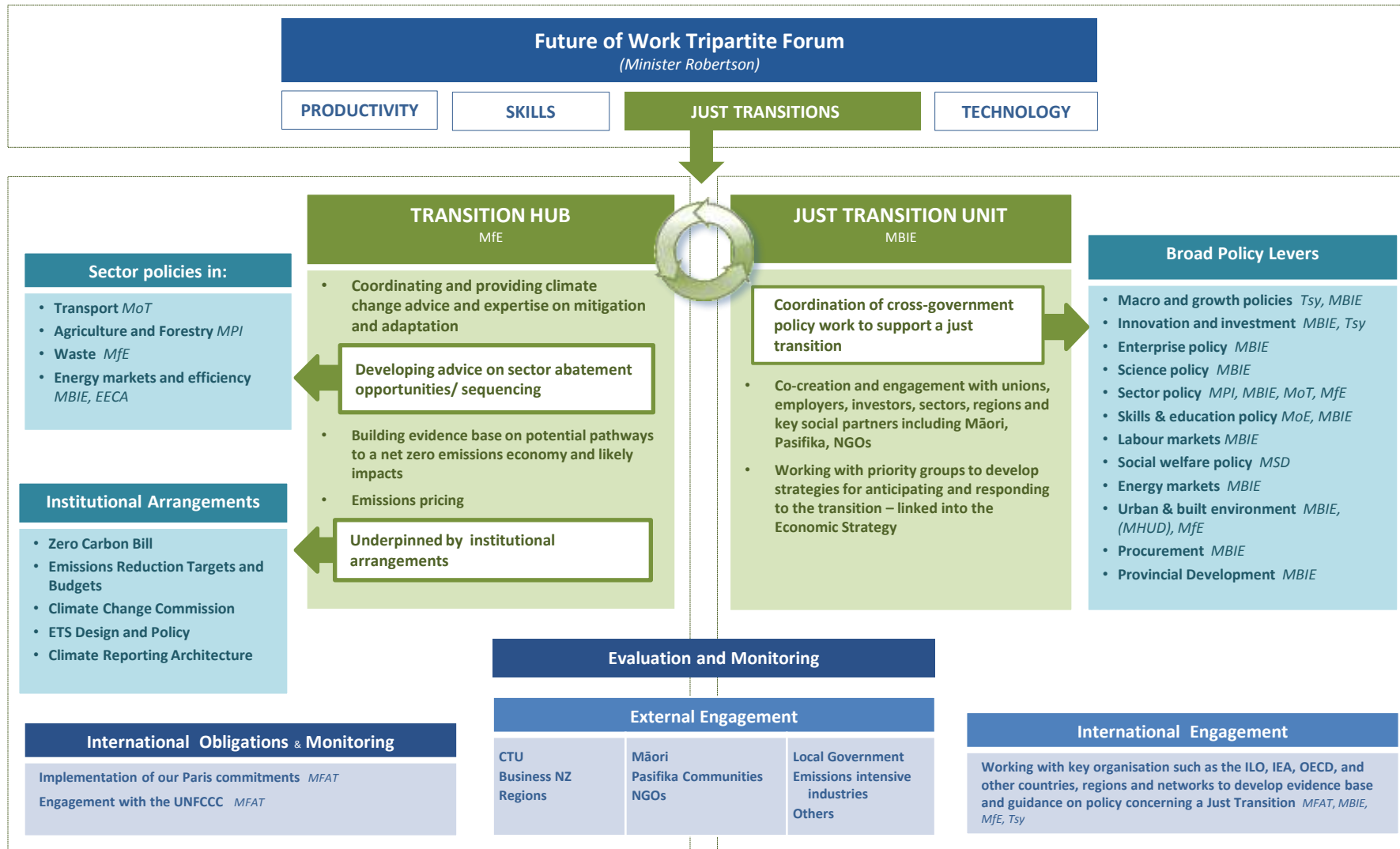
It will also allow participants to engage with local and international speakers and experts in the field.

It is the opportunity for people to play a key role in building what a successful transition looks like for New Zealand and how we best represent a Just Transitions partnership between government, business, workers and iwi.

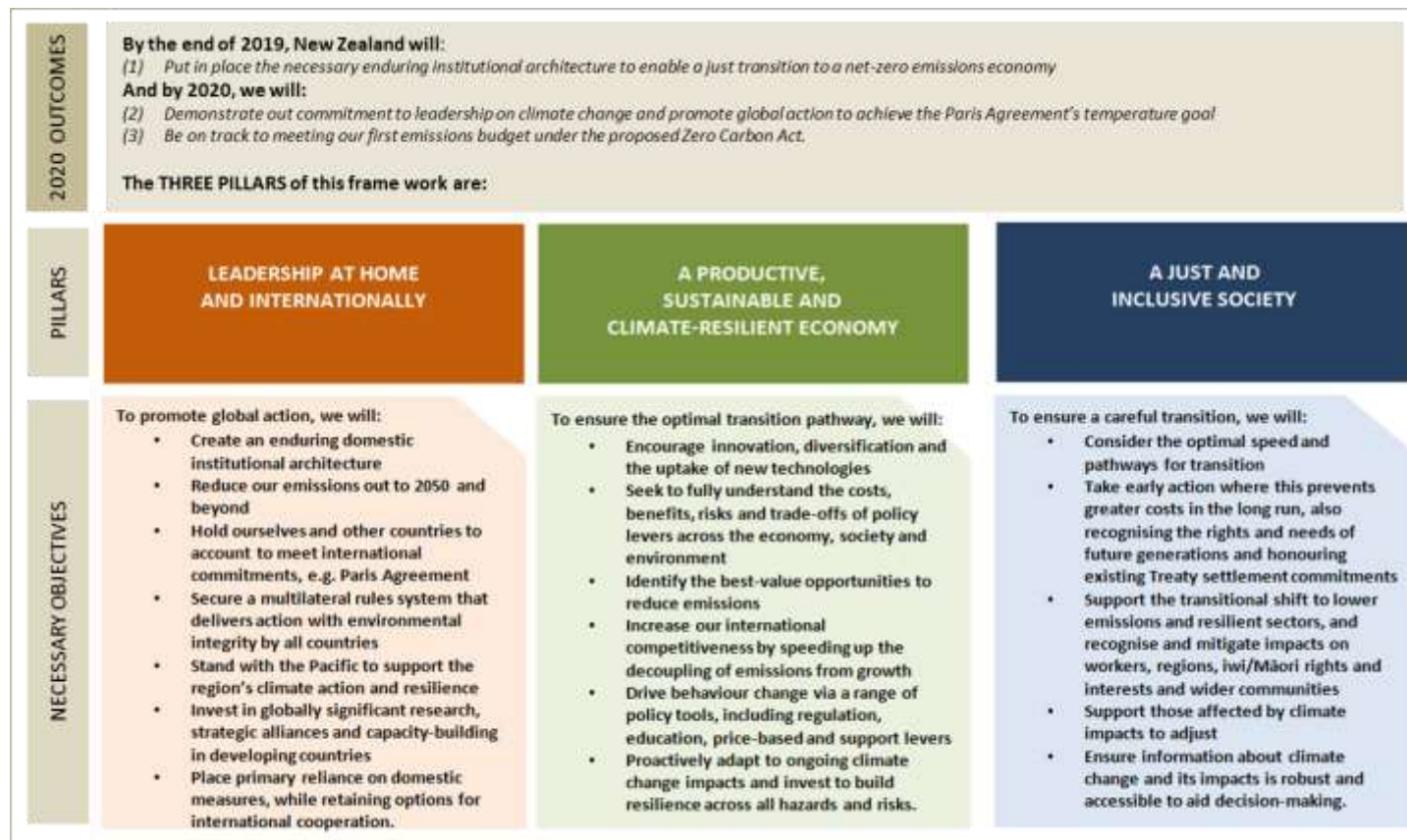
The National Summit will help guide how we will work together and how we successfully transition New Zealand to a low emission economy with good, high paying jobs.



Future of Work and Just Transitions



The all-of-government framework for climate change policy and decision-making



Source: MfE
As agreed by Cabinet (March/April 2018)