

EMPLOYMENT

Employment Rate from last year: 73.3% (-0.9pp)  
Employment Rate from last 5 years: +2.6pp  
Total from last year: 715,300 (-2,700)  
Total from last 5 years: +155,800

Male Employment Rate Total: 78.4% (376,300)  
Male Employment Rate from last year: -6,200  
Male Employment Rate from last 5 years: +73,000  
Female Employment Rate Total: 68.4% (339,000)  
Female Employment Rate from last year: +3,500  
Female Employment Rate from last 5 years: +82,800

UNDERUTILISATION

Underutilisation Rate from last year: 12.8% (+0.7pp)  
Underutilisation Rate from last 5 years: +0.2pp  
Total from last year: 99,800 (+5,300)  
Total from last 5 years: +22,700

Male Underutilisation Rate Total: 10.6% (43,200)  
Male Underutilisation Rate from last year: +3,400  
Male Underutilisation Rate from last 5 years: +11,900  
Female Underutilisation Rate Total: 15.2% (56,600)  
Female Underutilisation Rate from last year: +1,900  
Female Underutilisation Rate from last 5 years: +10,800

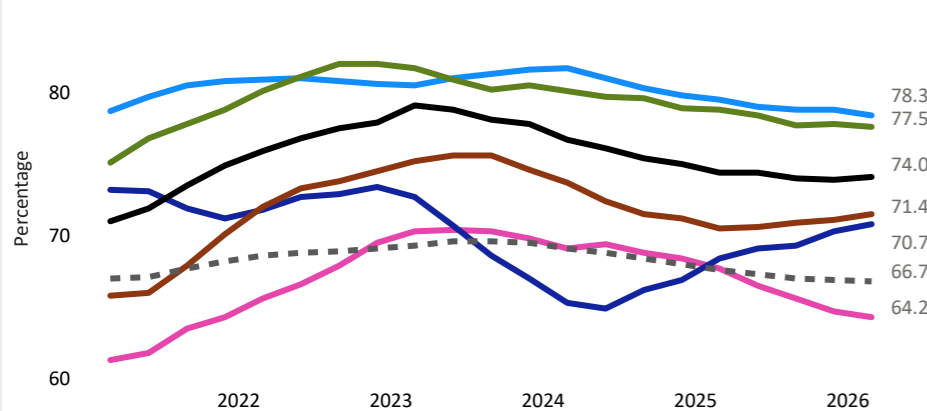
LABOUR FORCE PARTICIPATION RATE

Participation Rate from last year: 77.2% (-1.0pp)  
Participation Rate from last 5 years: +2.6pp  
Total from last year: 753,800 (-3,000)  
Total from last 5 years: +163,700

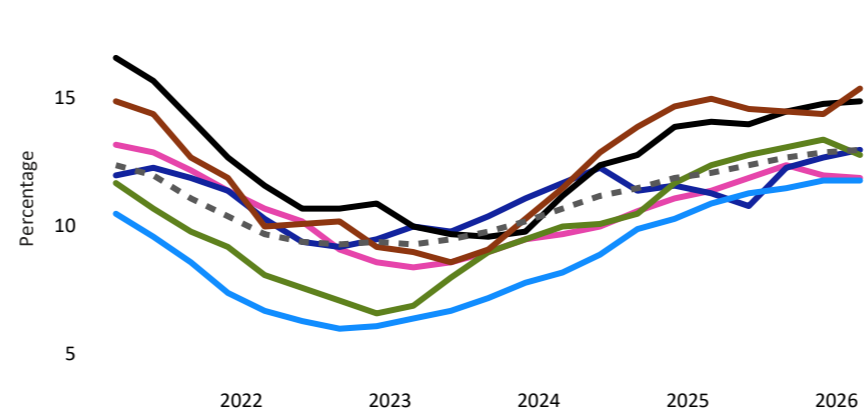
Male Participation Rate Total: 82.2% (394,400)  
Male Participation Rate from last year: -6,000  
Male Participation Rate from last 5 years: +77,000  
Female Participation Rate Total: 72.5% (359,400)  
Female Participation Rate from last year: +3,000  
Female Participation Rate from last 5 years: +86,600

Key: Chinese (pink), Continental European (blue), Indian (light blue), MELAA (black), SE Asian (green), Other Asian (orange), Total NZ (dashed grey)

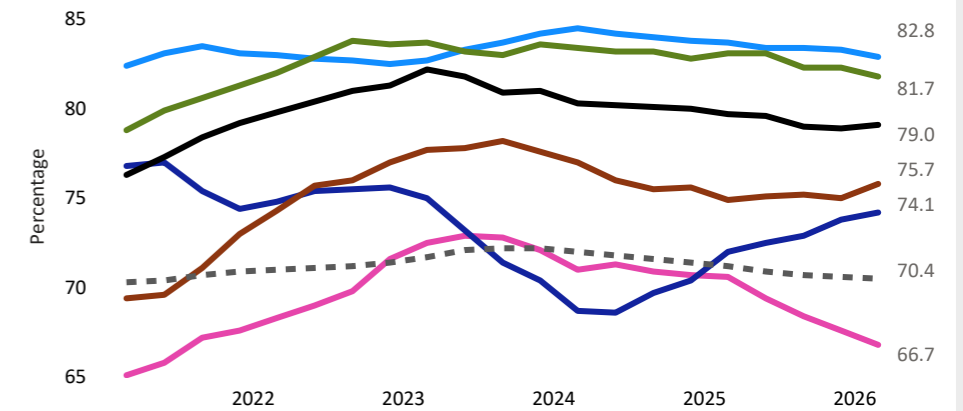
Employment Rate



Underutilisation Rate



Participation Rate



STUDY RATE (15-65+)

Study Rate from last year: 18.0% (+0.1pp)  
Study Rate from last 5 years: -1.0pp  
Male Study Rate from last year: 18.2% (+0.6pp)  
Male Study Rate from last 5 years: -0.8pp  
Female Study Rate from last year: 17.8% (-0.4pp)  
Female Study Rate from last 5 years: -1.1pp

UNEMPLOYMENT

UE Rate from last year: 5.1% (-0.1pp)  
UE Rate from last 5 years: -0.1pp  
Total from last year: 38,500 (-300)  
Total from last 5 years: +7,800  
Male UE Rate Total: 4.6% (18,100)  
Male UE Rate from last year: +300  
Male UE Rate from last 5 years: +4,000  
Female UE Rate Total: 5.7% (20,400)  
Female UE Rate from last year: -500  
Female UE Rate from last 5 years: +3,800

NOT IN EDUCATION, EMPLOYMENT OR TRAINING (Aged 15-24 years)

NEET rate from last year: 11.0% (+0.3pp)  
NEET rate from last 5 years: +0.9pp  
Total from last year: 15,400 (+500)  
Total from last 5 years: +2,800  
Male NEET rate Total: 11.2% (8,400)  
Male NEET rate from last year: +300  
Male NEET rate from last 5 years: +2,000  
Female NEET rate Total: 10.8% (7,000)  
Female NEET rate from last year: +200  
Female NEET rate from last 5 years: +800

Ethnic Groups	Employed				Unemployed				Underutilisation				Study rate		Working age population	
	Current quarter		Change from last Year		Current quarter		Change from last Year		Current quarter		Change from last Year		Current quarter	Change from last year	Year ended current qtr	% NZ pop
	People	Rate	People	Rate	People	Rate	People	Rate	People	Rate	People	Rate	People	People	People	Rate
Chinese	136,100	64.2%	-12,100	-3.4pp	5,100	3.6%	-1,100	-0.4pp	17,300	11.8%	-800	+0.5pp	19.4%	+1.2pp	211,900	4.9%
Continental European	41,300	70.7%	+600	+2.4pp	2,000	4.6%	-200	-0.5pp	5,800	12.9%	+900	+1.7pp	17.2%	-0.5pp	58,500	1.4%
Indian	222,000	78.3%	+3,700	-1.1pp	12,700	5.4%	+1,300	+0.5pp	28,200	11.7%	+2,800	+0.9pp	13.4%	-0.8pp	283,600	6.6%
Middle Eastern / Latin American / African (MELAA)	97,500	74.0%	+1,900	-0.3pp	6,600	6.3%	-200	-0.3pp	16,000	14.8%	+1,200	+0.8pp	22.4%	+0.9pp	131,800	3.1%
Other Asian	88,300	71.4%	-200	+1.0pp	5,200	5.6%	-400	-0.3pp	14,900	15.3%	+200	+0.4pp	23.0%	+1.4pp	123,700	2.9%
Southeast Asian (SE)	137,500	77.5%	+3,700	-1.2pp	7,400	5.1%	+100	-0.1pp	19,100	12.7%	+1,200	+0.4pp	17.9%	-0.9pp	177,300	4.1%
Total Ethnic Communities	715,300	73.3%	-2,700	-0.9pp	38,500	5.1%	-300	0.0pp	99,800	12.8%	+5,300	+0.7pp	18.0%	+0.1pp	975,800	22.6%

## ETHNIC COMMUNITIES

Ethnic communities includes the following communities: Chinese, Continental European, Indian, Middle Eastern/ Latin American/African (MELAA), Other Asian, Southeast Asian (SE).

## DEFINITIONS

**EMPLOYED:** People in the working-age population who, during the reference week, did one of the following:

- worked for one hour or more for pay or profit in the context of an employee/employer relationship or self-employment
- worked without pay for one hour or more in work which contributed directly to the operation of a farm, business, or professional practice owned or operated by a relative
- had a job but were not at work due to own illness or injury, personal or family responsibilities, bad weather or mechanical breakdown, direct involvement in an industrial dispute, or leave or holiday.

**EMPLOYMENT RATE:** The number of employed people expressed as a percentage of the working-age population. The employment rate is closely linked to the working-age population definition.

**FULL-TIME/PART-TIME STATUS:** Full-time workers usually work 30 hours or more per week, even if they did not do so in the survey reference week because of sickness, holidays, or other reasons. Part-time workers usually work fewer than 30 hours per week.

**FULL-TIME EQUIVALENT (FTE) JOBS:** The total number of full-time jobs plus half the number of part-time jobs. Does not include working proprietors.

**HOURS WORKED:** Average weekly paid hours (FTE) are calculated by dividing total ordinary hours paid by total FTEs.

**HOURLY EARNINGS:** Average hourly earnings are calculated by dividing total gross earnings by total paid hours.

**LABOUR FORCE:** Members of the working-age population, who during the survey reference week, were classified as 'employed' or 'unemployed.'

**LABOUR FORCE PARTICIPATION RATE:** The total labour force expressed as a percentage of the working-age population. Labour force participation is closely linked to how the working-age population is defined.

**NEET (NOT IN EMPLOYMENT, EDUCATION, OR TRAINING):** Young people aged 15–24 years who are unemployed (part of the labour force) and not engaged in education or training, and those not in the labour force and not engaged in education or training for many reasons.

**NEET RATE:** The total number of youth (aged 15–24 years) who are not in education, employment, or training (NEET), as a proportion of the total youth working-age population.

**NOT IN THE LABOUR FORCE:** Any neither employed nor unemployed. For example, this residual category includes people who:

- are retired
- have personal or family responsibilities such as unpaid housework and childcare
- attend educational institutions
- are permanently unable to work due to physical or mental disabilities,
- were temporarily unavailable for work in the survey reference week
- are not actively seeking work.

**POTENTIAL LABOUR FORCE:** The potential labour force consists of people who are not in the labour force but can be considered to be 'just outside it'. They meet two of the three criteria needed to be considered unemployed. Two main groups of individuals are in the potential labour force:

- **UNAVAILABLE JOBSEEKERS** – People who were actively seeking work, were not available to have started work in the reference week, but would become available within a short subsequent period
- **AVAILABLE POTENTIAL JOBSEEKERS** – People who are not actively seeking work but were available in the reference week and want a job.

**UNDEREMPLOYMENT:** People who are in part-time employment who would like to, and are available to, work more hours.

**UNDERUTILISATION:** The sum of those unemployed, underemployed, who are not actively seeking but are available and wanting a job and people who are actively seeking but not currently available, but will be available to work in the next four weeks.

**UNEMPLOYED:** All people in the working-age population who, during the reference week, were without a paid job, available for work, and had either actively sought work in the past four weeks ending with the reference week, or had a new job to start within the next four weeks.

**UNEMPLOYMENT RATE:** The number of unemployed people expressed as a percentage of the labour force.

**WORKING-AGE POPULATION:** The usually resident, non-institutionalised population of New Zealand aged 15 years and over.

### Disclaimer

This document is a guide only. It should not be used as a substitute for legislation or legal advice. The Ministry of Business, Innovation and Employment is not responsible for the results of any actions taken on the basis of information in this document, or for any errors or omissions.

### Data Source

Statistics New Zealand Household Labour Force Survey, ©Crown Copyright 2018. The material contained in this report is subject to Crown copyright protection unless otherwise indicated. The Crown copyright protected material may be reproduced free of charge in any format or media without requiring specific permission. This is subject to the material being reproduced accurately and not being used in a derogatory manner or in a misleading context. Where the material is being published or issued to others, the source and copyright status should be acknowledged. The permission to reproduce Crown copyright protected material does not extend to any material in this report that is identified as being the copyright of a third party. Authorisation to reproduce such material should be obtained from the copyright holders.

### Coverage difference

Average weekly paid hours and average hourly earnings are calculated from the Quarterly Employment Survey (QES), which has different coverage than the Household Labour Force Survey (HLFS). The QES is a survey of employers that excludes self-employed people, the Agriculture industry, unpaid family workers and New Zealand Defence Force, while the HLFS is a survey of households that only includes usually resident New Zealanders, so can exclude some temporary seasonal labourers. If you have any feedback, questions or suggestions please contact us at:

[LabourMarketInsights@mbie.govt.nz](mailto:LabourMarketInsights@mbie.govt.nz)

### Data Terminology

NC - "No change"

S - "Suppressed"