

# Regional Skills Leadership Groups

## A system overview

### Purpose

Regional Skills Leadership Groups (RSLGs) are the independent regional voice of labour market challenges and opportunities. They work with key stakeholders to develop a **Regional Workforce Plan (RWFP)** which will help coordinate and prioritise local action, and influence national level investment and policy settings. RSLGs will:

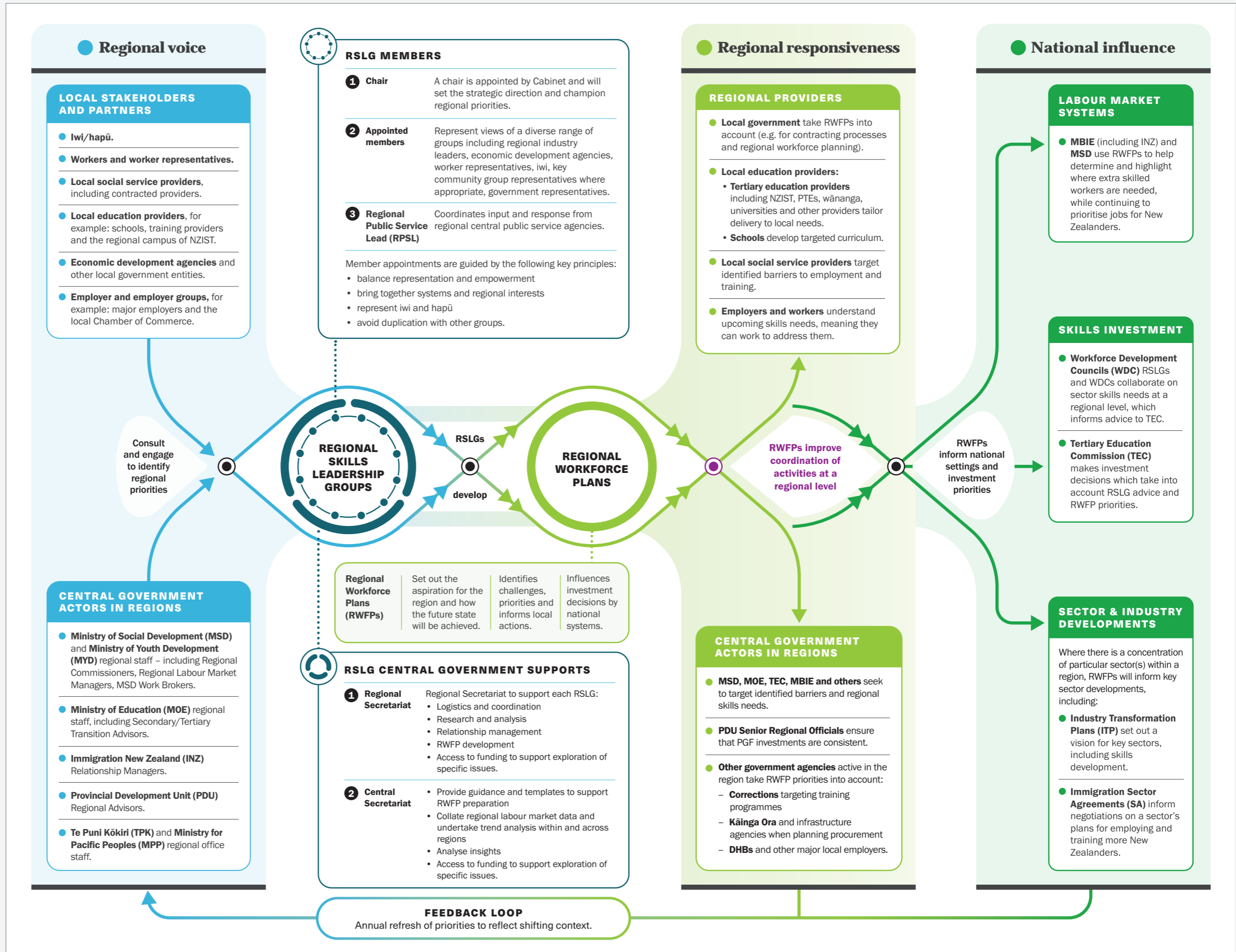
- 1 Operate at a strategic and collaborative level** within each geographic region.
- 2 Create local leadership and a common view** on the region's investments in skills and training.
- 3 Provide a coordinated approach** to regional labour market planning and advice.
- 4 Support movement toward higher skilled labour markets** and increased labour productivity.

### Functions

- **Provide coordinated, strategic advice and information** about regional labour market disruptions resulting from significant and unexpected events, e.g. COVID-19.
- **Identify current and future workforce and skills needs** in regions.
- **Identify sub-regional priorities and challenges** employers experience in accessing skilled workers.
- **Deliver an annual RWFP** to understand regional demand and supply of workers.
- **Provide advice to government and employers, and facilitate action** with regional actors on how to meet these needs.

### 15 Regions

- Northland
- Auckland
- Waikato
- Bay of Plenty
- Gisborne
- Hawke's Bay
- Taranaki
- Manawatū-Whanganui
- Wellington
- Marlborough
- Nelson-Tasman
- West Coast
- Canterbury
- Otago
- Southland



### Key & Glossary

<b>DHB</b> District Health Board	<b>MBIE</b> Ministry of Business, Innovation and Employment	<b>MSD</b> Ministry of Social Development	<b>PDU</b> Provincial Development Unit	<b>RSLG</b> Regional Skills Leadership Group	<b>TEC</b> Tertiary Education Commission
<b>INZ</b> Immigration New Zealand	<b>MOE</b> Ministry of Education	<b>MYD</b> Ministry of Youth Development	<b>PGF</b> Provincial Growth Fund	<b>RWFP</b> Regional Workforce Plan	<b>TPK</b> Te Puni Kōkiri
<b>ITP</b> Industry Transformation Plan	<b>MPP</b> Ministry for Pacific Peoples	<b>NZIST</b> New Zealand Institute of Skills and Training	<b>PTE</b> Private Training Establishment	<b>SA</b> Sector Agreement	<b>WDC</b> Workforce Development Council