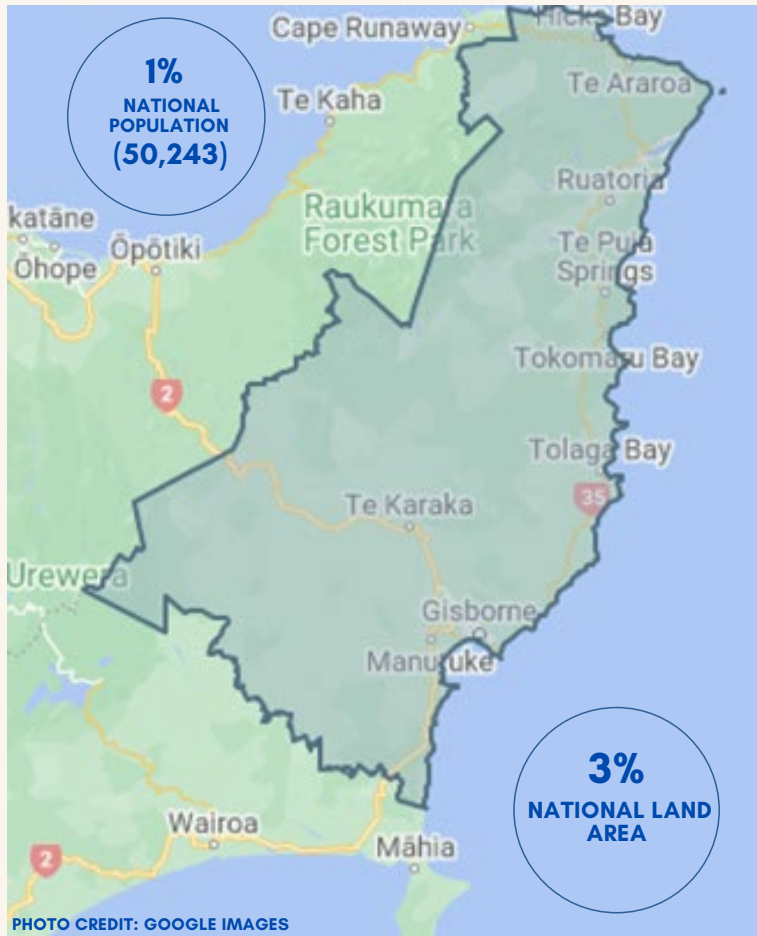


CARE-RSLG's

# REGIONAL WORKFORCE PLAN REFRESH SUPPORTING INSIGHTS



## THE REGION

- Tairāwhiti has the highest proportion of under 25's in Aotearoa (39% of region's population).
- 52.9% of people who live in Tairāwhiti are Māori
- Although the vast majority of people live in Gisborne City, there are a number of rural townships spread across the region - where we live:
  - 1.6% live in Ruatoria
  - 0.9% live in Tokomaru Bay
  - 1.7% live in Tolaga Bay
  - 1.1% live in Te Karaka
  - 73% live in Gisborne.

Source: Our Tairāwhiti 2021-2031 Long Term Plan - Gisborne District Council

## INDUSTRIES THAT CREATED THE MOST JOBS 2012-2022\*\*

1. AGRICULTURE, FORESTRY AND FISHING 965
2. HEALTH CARE & SOCIAL ASSISTANCE 484
3. CONSTRUCTION 464

EMPLOYMENT RATE\*

**60.6%**

LABOUR FORCE\*

Participation Rate

**63.6%**

UNDERUTILISATION RATE\*

**10.1%**

MEAN HOUSEHOLD EARNINGS\*

**\$90,100**

PEOPLE STUDYING L3-4 (2022)\*

**1,491**

new dwelling consents per 10,000 (2023) \*

**3**

NEET RATE\*\*

Young people Not in Employment, Education or Training (NEET)

**13.2%**

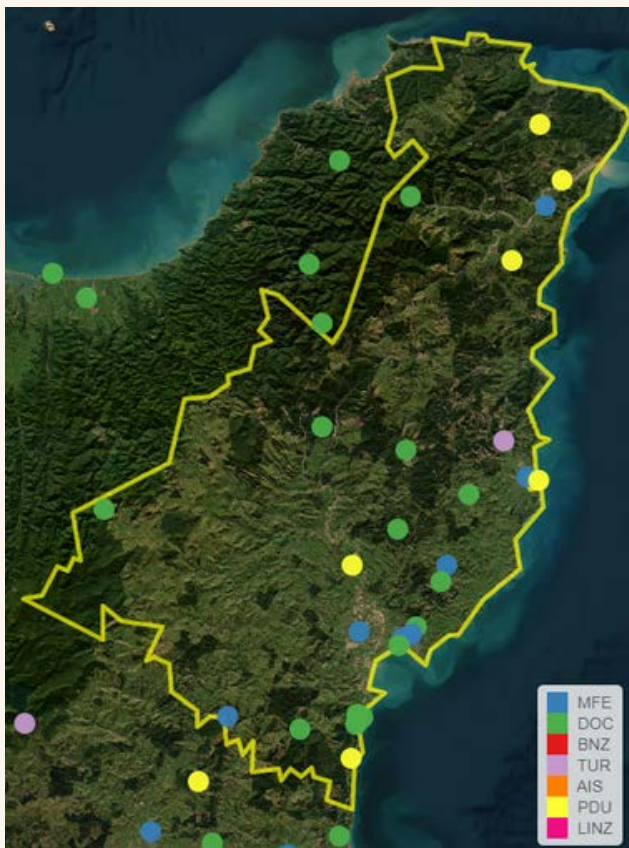


# TAIAO (JOBS FOR NATURE)

## Insights

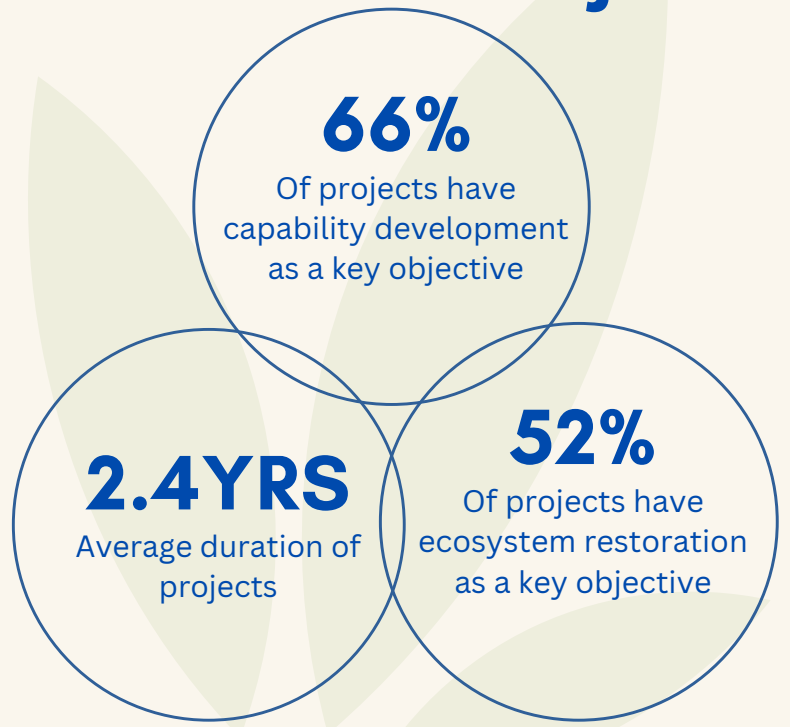
The Mahi mō te Taiao or Jobs for Nature initiative will have employed approximately 371 people over the lifetime of these projects. Given that a key objective for the projects has been developing skills, the growth opportunities for our rural workforce is significant. Programmes which help the region to recover from the impacts of Cyclone Gabrielle are a good match for Mahi mō te Taiao workers and project leaders because of the location and nature of the mahi and the skills required to do it.

Source: Ministry for the Environment - Manatū Mo Te Taiao



Source: Ministry for the Environment - Manatū Mo Te Taiao

## Tairāwhiti Projects



Source: Ministry for the Environment - Manatū Mo Te Taiao

## National Projects



Source: Jobs for Nature programme benefits report 2022

## Project Activities

- PLANTING FRESHWATER MONITORING FISH PASSAGE REMEDIATION
- FENCING WATERWAYS PLANT AND ANIMAL PEST CONTROL
- PROJECT MANAGEMENT MĀTAURANGA MĀORI.
- ADMINISTRATION CATCHMENT MANAGEMENT PLANS
- RESTORATION OF HISTORICAL CULTURAL SITES
- CULTURAL HEALTH MONITORING (KAITIAKI MONITORING FRAMEWORKS)

Source: Jobs for Nature programme benefits report 2022

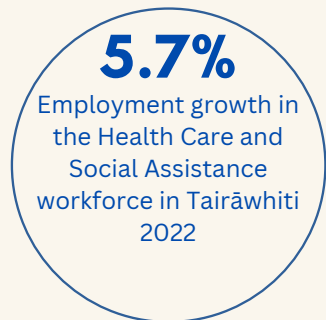
# HEALTH

## Insights

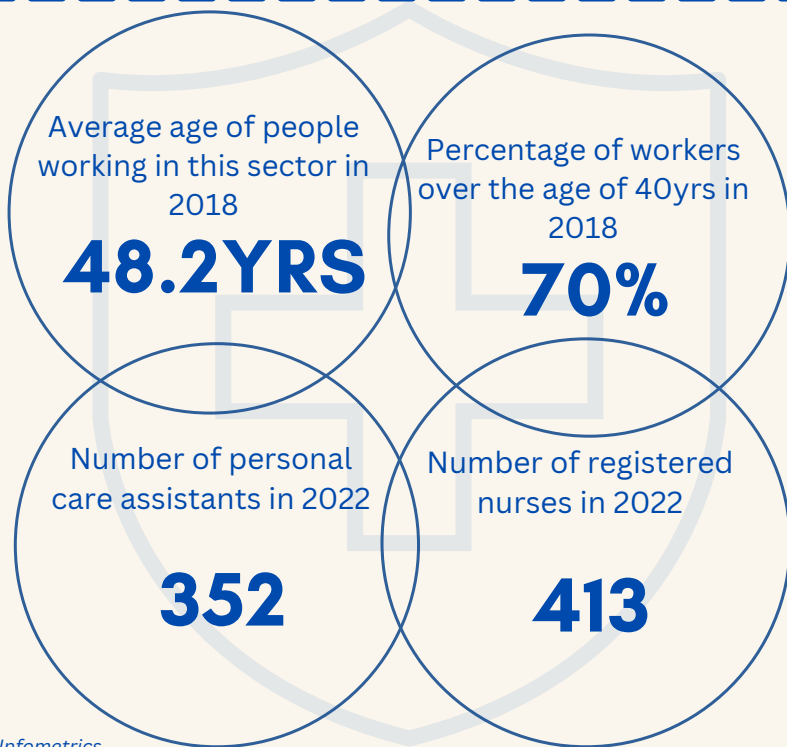


Health care and social assistance sector is a significant employer in Tairāwhiti, employing close to 3,000 people in 2022. This sector plays a crucial role in supporting the local economy and also ensures the wellbeing of the population. Since it is an essential service, it is relatively stable even during economic downturns. Understanding the nature of this workforce is important to Tairāwhiti from an economic and wellbeing point of view.

We are in the middle of a huge spike in demand. This is expected to taper off towards the end of 2023 and then slowly increase heading towards 2030.



Source: Infometrics



Source: Infometrics

### Top five occupations - people employed in the sector:

Occupation	2023
Health Professionals	1,089
Carers & Aides	532
Health & Welfare Support Workers	184
Legal, Social & Welfare Professionals	147
Inquiry Clerks & Receptionists	104

Source: Infometrics

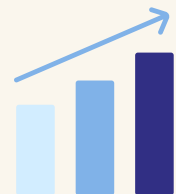
### The type of growth within the sector

Employment in the health care and social assistance workforce currently sits at:

**2,770 in 2023**

It is predicted to grow to:

**2,976 by 2028**



Source: Infometrics Note: The sector definition of Health Care and Social Assistance from the Infometrics website has been used.