



**MINISTRY OF BUSINESS,
INNOVATION & EMPLOYMENT**
HIKINA WHAKATUTUKI

2019 Endeavour Fund Roadshow



Introduction and Agenda

- Housekeeping
- Introductions
- Science system and funding overview
- 2018 Endeavour wrap-up
- 2019 Endeavour Fund
- Operational updates
- A 'Better Brew...'
- Other MBIE funding opportunities
- Questions and Close

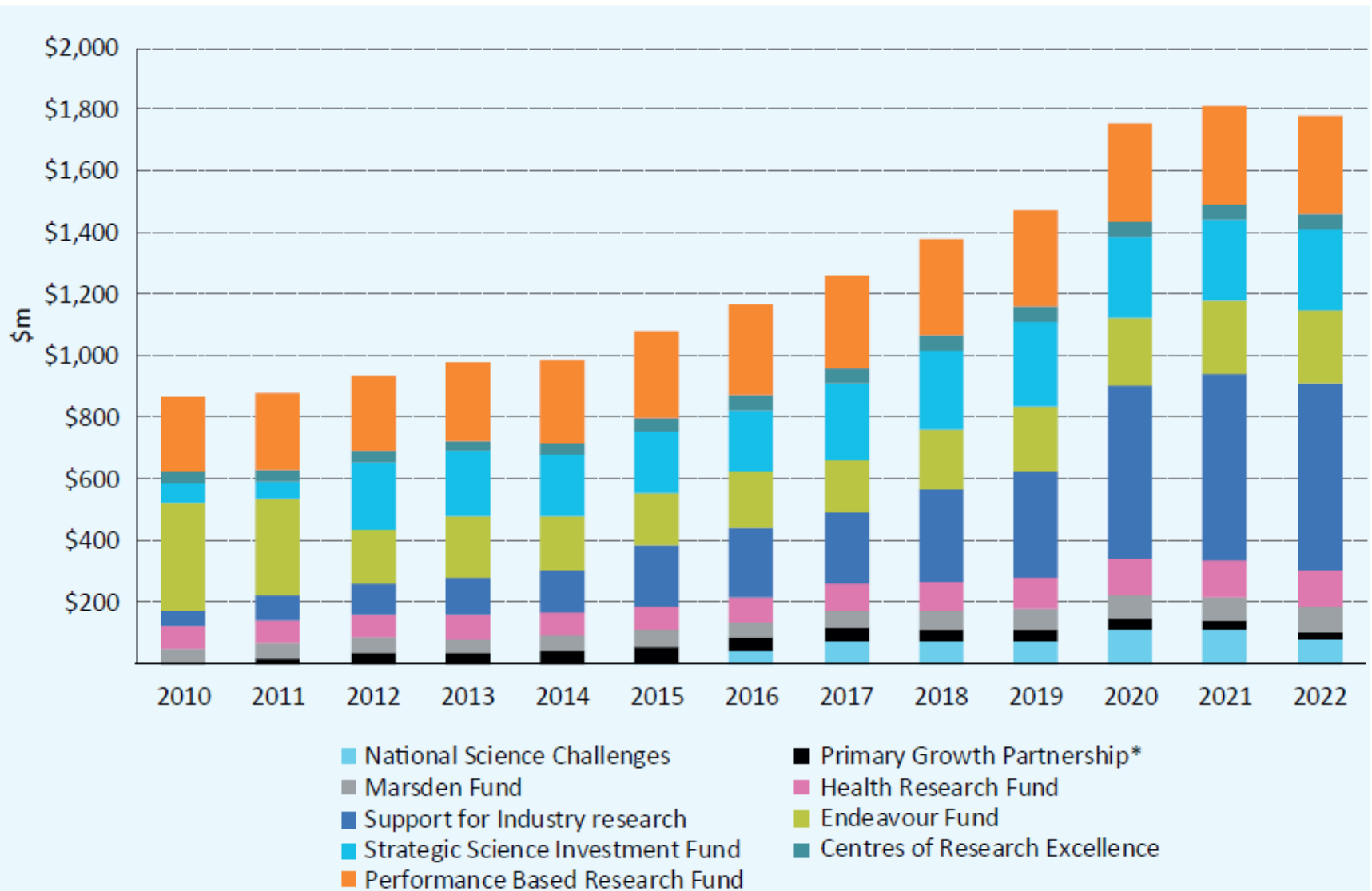
Government strategy



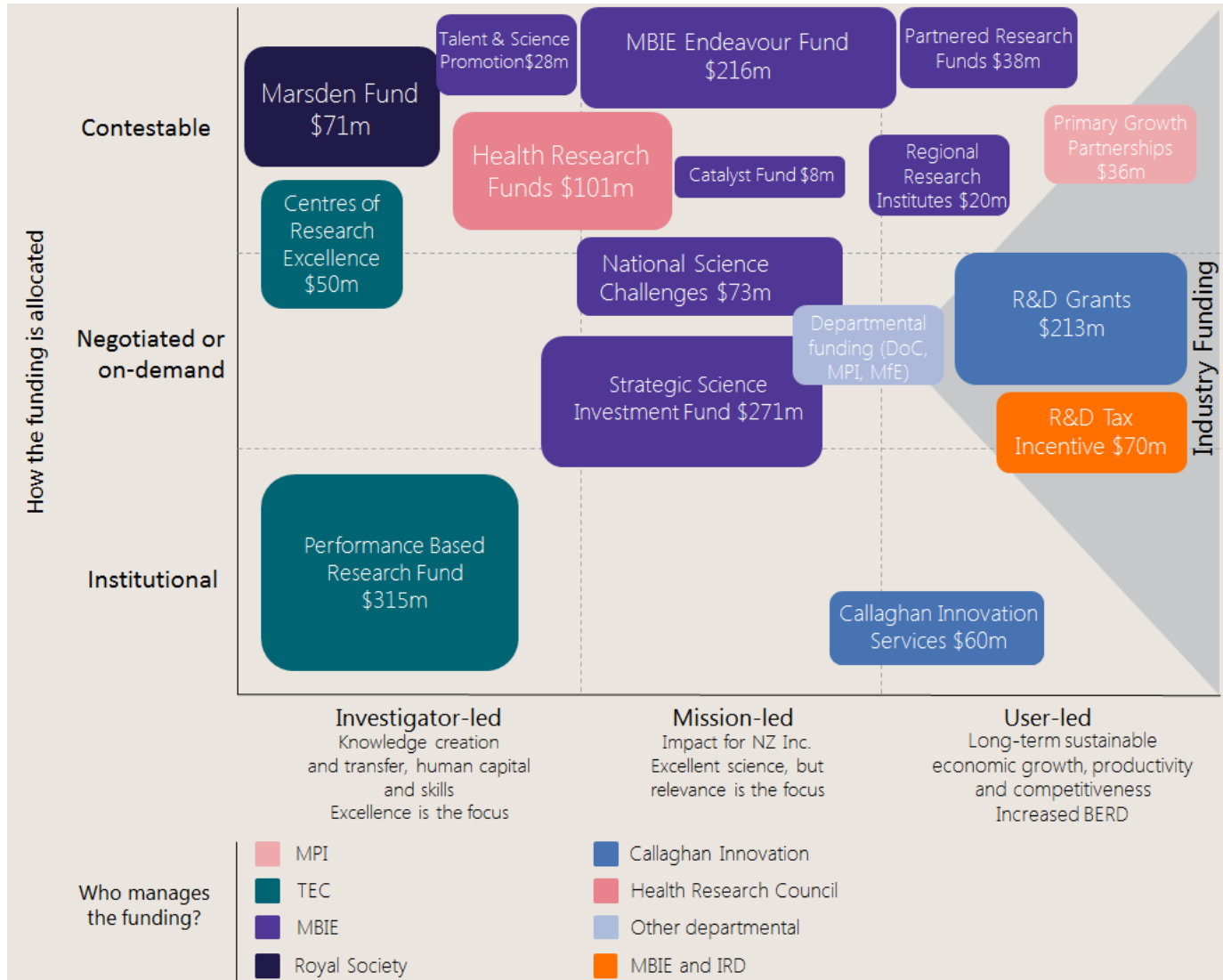
The Government's vision for New Zealand puts the long-term wellbeing of people and the environment at its centre. This includes priorities of reducing child poverty, access to affordable, healthy homes, opportunities for meaningful work, and a just transition to a sustainable, low-emissions economy.

- R&D to 2% of GDP
- New RS&I strategy being developed

Public funding through key mechanisms, actual and forecast



Government funding



MBIE Diversity in Science Statement

- Published September 18 and sets out our goals and ambitions for a more diverse science and research base
- Read/listen to case studies from researchers talking about diversity on our website
- MBIE is collecting diversity information – gender, ethnicity, career stage and date of birth



MBIE Diversity in Science Statement

Diversity is vital for our science system to realise its full potential. A focus on diversity ensures we capture the very best ideas and talent to support the highest quality research.

Outcome:
An inclusive and diverse environment
Everyone will have a fair and equal opportunity to participate in the science system to their fullest potential by:

- › Ensuring that everyone can see themselves as the next research leaders
- › Recognising that the pathways to success are not linear and include a wide range of achievements
- › Challenging bias and ensuring fair and inclusive funding processes
- › Encouraging a diversity of people and perspectives as part of the scientific process
- › Reflecting on diversity in everything we say and do. From how and what we write, to the design of our funding policies and processes and our people

Enablers:
People, data, policy and process

PEOPLE

- Showcase researchers from a diverse range of backgrounds
- Ensure a diversity of people and perspectives in advisory, assessment and decision making bodies
- Raise awareness of unconscious bias

DATA

- Report on the diversity of our applicants, award holders and advisory, assessment and decision making bodies

POLICY AND PROCESS

- Review funding policies and processes to understand their impact on inclusion and diversity
- Build our understanding of inequities in the science talent pipeline
- Connect with other parts of the system to identify collective goals, promote existing initiatives and identify gaps.

Our Aspiration:
A vibrant and successful science and research base that reflects the diversity of New Zealand

 **MINISTRY OF BUSINESS,
INNOVATION & EMPLOYMENT**
HIKINA WHAKATUTUKI

[New Zealand Government](#)

National Research Information System (NRIS)

- An information hub where people can easily find information about research in New Zealand
- Connecting information about
 - Funding
 - Research projects
 - Research outputs
 - Organisations and their relationships
- Stage 1 brings together data from MBIE, HRC, RSNZ and MPI
- ORCID iDs are being asked for in Endeavour applications

2018 Endeavour Wrap-up



Summary of 2018 Endeavour

Smart Ideas

	Number submitted	Number funded	Annual value
2017	250	41 (16.4%)	\$15.4 million
2018	254	46 (18.1%)	\$16.1 million

Research Programmes

	Number submitted	Number funded	Annual value
2017	158	27 (17.1%)	\$42.6 million
2018	145	23 (15.8%)	\$41.3 million

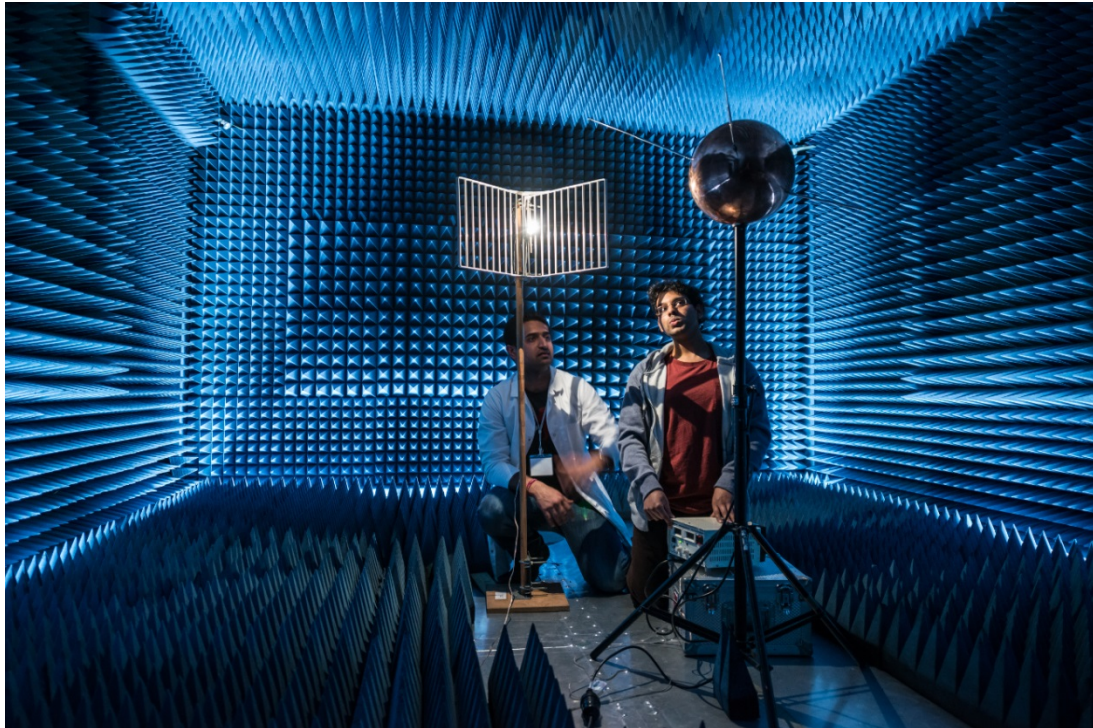
Vision Mātauranga seen as relevant

	2017	2018
Relevant by applicant	96.6%	97.0%
Relevant by assessor	83.9%	81.1%
How well addressed (0-3)	2.21	2.26

Impact Panel Observations

- Differentiate between outputs, outcomes and impacts
- The executive summary should address all four assessment criteria
- Show how your research fits into the wider research landscape
- Vision Mātauranga means a genuine co-development with Māori
- Transdisciplinary research programmes offer a good way to address complex system issues
- Address potential risks in both excellence and impact

2019 Endeavour Fund



- The new **Investment Plan** covers the next three rounds (2019, 2020 and 2021)
- Should be read with the annual
 - **Gazette Notice**
(assessment criteria and funding available)
 - **Call for Proposals**
(sets out how to apply)



2019 Endeavour Fund

What's the same

- Fund objectives
- Importance of Excellence and Impact
- Smart Ideas and Research Programmes
- Vision Mātauranga

What's changing

- Investment signals re-aligned to Government priorities
- The migration of funding from Research Programmes to Smart Ideas

What's new

- Proposals must be made under **'Transform'** or **'Protect and Add Value'**
- Team-impact track record
- Diversity information

What's the same



Investment mechanisms

Smart Ideas provide for smaller investments intended to catalyse and rapidly test promising, innovative research ideas

- Two or three years
- \$400k - \$1 million

Research Programmes provide for larger investments intended to support ambitious, excellent and well-defined research ideas

- Three, four or five years
- \$500k or more per year, no upper limit



Smart Ideas

- **Concepts:** Assessment of excellence only
- **Full Proposals:** Assessment of excellence and impact concurrently
- **Assessment Criteria**

Excellence

- Science (50%)
- Team (15%)

Impact

- Benefit to New Zealand (25%)
- Implementation Pathway(s) (10%)



Smart Ideas Timeline

7 Nov 2018 (12 noon)	Closing date for registration
28 Nov 2018 (12 noon)	Closing date for concept proposals
April 2019	Applicants notified of Science Board decisions
29 May 2019 (12 noon)	Closing date for full proposals
Aug 2019	Science Board makes funding decisions
Sept 2019	Applicants notified of Science Board decisions
1 Oct 2019	Contracts begin

Research Programmes

One proposal submitted, two-stage assessment process

Excellence

- Science (25%)
- Team (25%)

Impact

- Benefit to New Zealand (25%)
- Implementation Pathway(s) (25%)

Proposals that have been assessed against both the Excellence and Impact are assessed for their alignment to the Investment Signals in the Investment Plan



Research Programmes Timeline

12 Dec 2018 (12 noon)	Closing date for registration
6 Mar 2019 (12 noon)	Closing date for proposals
May 2019	Applicants notified of Science Board decisions on Excellence
Aug 2019	Science Board makes funding decisions
Sept 2019	Applicants notified of Science Board decisions
1 Oct 2019	Contracts begin for funded proposals

Vision Mātauranga

Vision Mātauranga research may contribute to any or all of the following impacts for New Zealand:

- enhancing productivity and performance of Māori and non-Māori enterprise through new products, processes and services
- achieving environmental sustainability by exploring distinctive Māori relationships with the environment
- improving health¹ and social wellbeing for Māori, and
- generating new knowledge at the interface between indigenous knowledge and science and technology

¹ The Endeavour Fund does not fund research with the primary objective of health outcomes, but will support this as a secondary objective.

What's changing



Investment Signals realigned to Government priorities

General signals

- Excellent research, with high potential impact in areas of future value, growth or critical need for New Zealand
- Leverage wider investment and knowledge, in New Zealand and overseas
- Give effect to Vision Mātauranga
- Take account of broader Government policy and strategy documents

Future Value, Growth or Critical Need Signals **(New)**

- Creating and growing knowledge-intensive industries
- Supporting the transition to a low-emissions economy

Note: Endeavour will fund applications outside these signals

Migration of funding to Smart Ideas

Indicative funding allocations

- Smart Ideas \$18 million per annum
- Research Programmes \$40 million per annum

Funding targets

- Smart Ideas 20% of portfolio
- Research Programmes 80% of portfolio

What's new



Impact categories

Research Programmes

- A proposal for Research Programmes must be made under one of the **new** impact categories
 - Protect and Add Value
 - Transform
- Currently ~15% of Research Programmes investment can be considered as Transform and we want this to grow

Protect and Add Value

RESEARCH PROGRAMMES IMPACT CATEGORIES		THE FUND'S OBJECTIVES		
		Economic	Environmental	Society
PROTECT AND ADD VALUE	Immediate Impact	<ul style="list-style-type: none"> > Improved products and services, or > New products or services which fit in existing categories, or > Improved or more sustainable production and other business processes. 	<ul style="list-style-type: none"> > Better environmental management, regulation, conservation or restoration activity. 	<ul style="list-style-type: none"> > Improved techniques for delivery of public services, or > Better evidence for public policy design, or > Better understanding of and resilience to risk.
	Ultimate Impact	<p>leading to...</p> <ul style="list-style-type: none"> > Growth of existing sectors, or > Greater value derived from natural resources, or > Less pollution. 	<p>leading to...</p> <ul style="list-style-type: none"> > Better environmental quality or reduced risks to the environment, or > Less pollution. 	<p>leading to...</p> <ul style="list-style-type: none"> > More effective or efficient public service delivery, or > Better life outcomes for individuals.

Transform

- Proposals the ‘Transform’ category
 - a. Immediate impact.** Is the new, or changed, technology, process, practice, business model or policy, that is enabled by the research, a radical change and/or a leap in performance versus the status quo?
AND
 - b. Ultimate impact.** Could the research ultimately lead to a transformational change within the New Zealand economy, society or environment by, for example, creating or disrupting economic activities, creating a new sustainable resource use or eliminating environmental damage, or changing the character of risks and opportunities faced by individuals and society?
- Proposals that do not meet both criteria should be made under the ‘Protect and add value’ category

Transform

RESEARCH PROGRAMMES IMPACT CATEGORIES		THE FUND'S OBJECTIVES		
		Economic	Environmental	Society
TRANSFORM	Immediate Impact	<ul style="list-style-type: none"> > Entirely new category of good or service, or > Technology or practice with order of magnitude improvement in performance or entirely new capability(ies). 	<ul style="list-style-type: none"> > New technique for environmental management, conservation or restoration. 	<ul style="list-style-type: none"> > New ways of living or organising communities and society, or > New mode of delivering public services or new category of policy intervention.
	Ultimate Impact	<ul style="list-style-type: none"> > Creation of, or growth in, an economic activity which is new for New Zealand, or > Disruption of an existing economic sector, or > Entering or creating new market, or > New types of work, or > New sustainable use or eliminated use of a natural resource. 	<p>leading to...</p> <ul style="list-style-type: none"> > Elimination (virtual or complete) of a pest or the damage it causes, or > Dramatic improvement in state of the environment, or > Elimination of a pollution stream. 	<p>leading to...</p> <ul style="list-style-type: none"> > Total change in the character and magnitude of risks or opportunities people face, or > Order of magnitude improvement in policy efficiency or effectiveness.

Examples of past Transformational Impact

- Bush-sickness discovered to be due to cobalt deficiency in the 1930s
- First fully disposable plastic syringe was developed in New Zealand in 1956
- Use of chemicals to break dormancy in kiwifruit in the 1980s
- Wireless charging for electric vehicles in the 2000s
- Roebel cable winding machine used in HTS (high temperature superconducting) wire in 2007
- Rodent eradication on offshore islands in the late 1970s
- Warm, dry homes improving the health of the occupants in the early 2000s

Examples of projects with potentially transformative impact from the current portfolio

Genomics for Production and Security in a Biological Economy

MARS bio-medical imaging

He Waka Eke Noa: Māori Cultural Frameworks for Violence Prevention and Intervention

TiTeNZ - Titanium Technologies New Zealand

Operational Updates



What's changing

Achieving the best possible assessment

- Need information to identify assessors, so some information fixed at registration
 - Title (one, 12 words, meaningful and descriptive)
 - Proposal Summary (former Science Abstract)
 - Funding Objective (Economic, Environmental and Society)
 - Research Classifications (ANZSRC, SEO and FOR codes, align with above)
 - Research Keywords
- Impact Categories and most of the Project Team are NOT fixed
- Research Programmes registration closing at noon, Wednesday, 12 December 2018

What's changing

IMS Changes

- Revised application form structure to improve flow and reduce duplication
- FTE table fixed
- Profiling information now captured at project level
- Introduced 'Team Impact Track Record' for Research Programmes
- Diversity data collected for the key Project Team roles

A Better Brew...



Key messages

- Design your proposal with the end in mind
- Bring right people together (domestic and international partnerships)
- Engage with Māori partners and end users early
- Be clear and concise
- Avoid generalities – be specific
- Co-funding not mandatory, but potentially useful the nearer you are to the market
- Link to relevant strategies – government and sector
- Show stretch in the science and the thinking
- Health outcomes cannot be the primary objective of the research



Public Statements

- Use language that the general public and journalists will understand
- Be concise and precise. Avoid jargon
- Do not put IP you want to protect
- Run it past your comms/legal team
- Make the outcomes and benefits clear

Executive Summary

- Key 'go-to place' in proposals
- Split into the four assessment criteria so easy to find necessary information
- Limited words, use them wisely and be descriptive

Science stretch

- We continue to encourage science stretch
- The science needs to be well managed, including a risk mitigation plan

Capturing Benefits within New Zealand

- If considering licencing off-shore, think about how benefits will accrue back to New Zealand
- More than just royalties
- Interested in building capability locally
- Are there spin-off benefits for New Zealand?

End users

- Align with government and sector strategies
- Engage with policy makers if end users are Government
- Confirm the research is a priority with end users
- Co-design of your proposal with end users
- Data collection is not an end use in itself

Other MBIE funding opportunities



MBIE supported Infrastructure

- **New Zealand eScience Infrastructure**

www.nesi.org.nz or contact support@nesi.org.nz



- **Research Education Advanced Network NZ**

www.reanz.co.nz or contact help@reanz.co.nz



- **Australian Synchrotron**

www.synchrotron.royalsociety.org.nz



- **RV Tangaroa**

www.niwa.co.nz or contact rob.christie@niwa.co.nz



Other funding opportunities

- New Zealand Data Science Platform
(portal opens late-October 2018)
- Vision Mātauranga Capability Fund
(portal opens November 2018)
- PreSeed Accelerator Fund
(opening late 2018)
- Commercialisation Partner Network
(opening late 2018)

Visit the MBIE website for more information and subscribe to the MBIE Alert e-newsletter for updates

Want to know more about Endeavour?

We can

- explain the process
- help with use of the Portal and resolve Portal problems

We **cannot**

- interpret the Call for Proposals
- provide specific advice about your proposal



Contact us

Questions on the process, CfP or content

Email	endeavour@mbie.govt.nz
--------------	------------------------

Questions on the portal or proposal submission

Email	IMSsupport@mbie.govt.nz
--------------	-------------------------

Call	0800 693 778 (8.30am – 4.30pm)
-------------	--------------------------------

Web	See MBIE's Endeavour Fund webpage
------------	-----------------------------------

Questions?

