



**MINISTRY OF BUSINESS,
INNOVATION & EMPLOYMENT**
HĪKINA WHAKATUTUKI

Te Ara Paerangi

Future Pathways Programme Update

Information Session

August 2023

Housekeeping

Purpose of this session

- Provide you with an update on Te Ara Paerangi – Future Pathways work programme and an opportunity to ask questions.

Questions

- Type questions in the **Q&A tab** at any time (found at the bottom of the screen). We will read these out in the Q&A session.
 - We will not be monitoring the conversation in Chat, so questions asked there may not be included in the Q&A.
-

Panellists



Dr Gill Jolly
Chief Science Advisor
MBIE



Dr Prue Williams
General Manager,
Future Research System
MBIE



Sada Charlie
Principal Policy Advisor
Science Policy
MBIE



Tara Thurlow-Rae
Manager,
Future Pathways
MBIE



Landon McMillan
Manager,
Science Policy
MBIE

Overview



Te Kāwanatanga o Aotearoa
New Zealand Government

Te Ara Paerangi Future Pathways White Paper 2022



- Proliferation of multiple and competing governance structures, strategies and priorities
- Institutions with limited capacity to reorient to new industry and priorities
- System responsiveness to Māori is weak and models of engagement are poor
- Lack of viable career pathways for talented people

Current state

Key shifts

- Enable greater impact
- Establish National Research Priorities
- Embed Te Tiriti
- Grow and revise funding approaches
- Redesign institutions

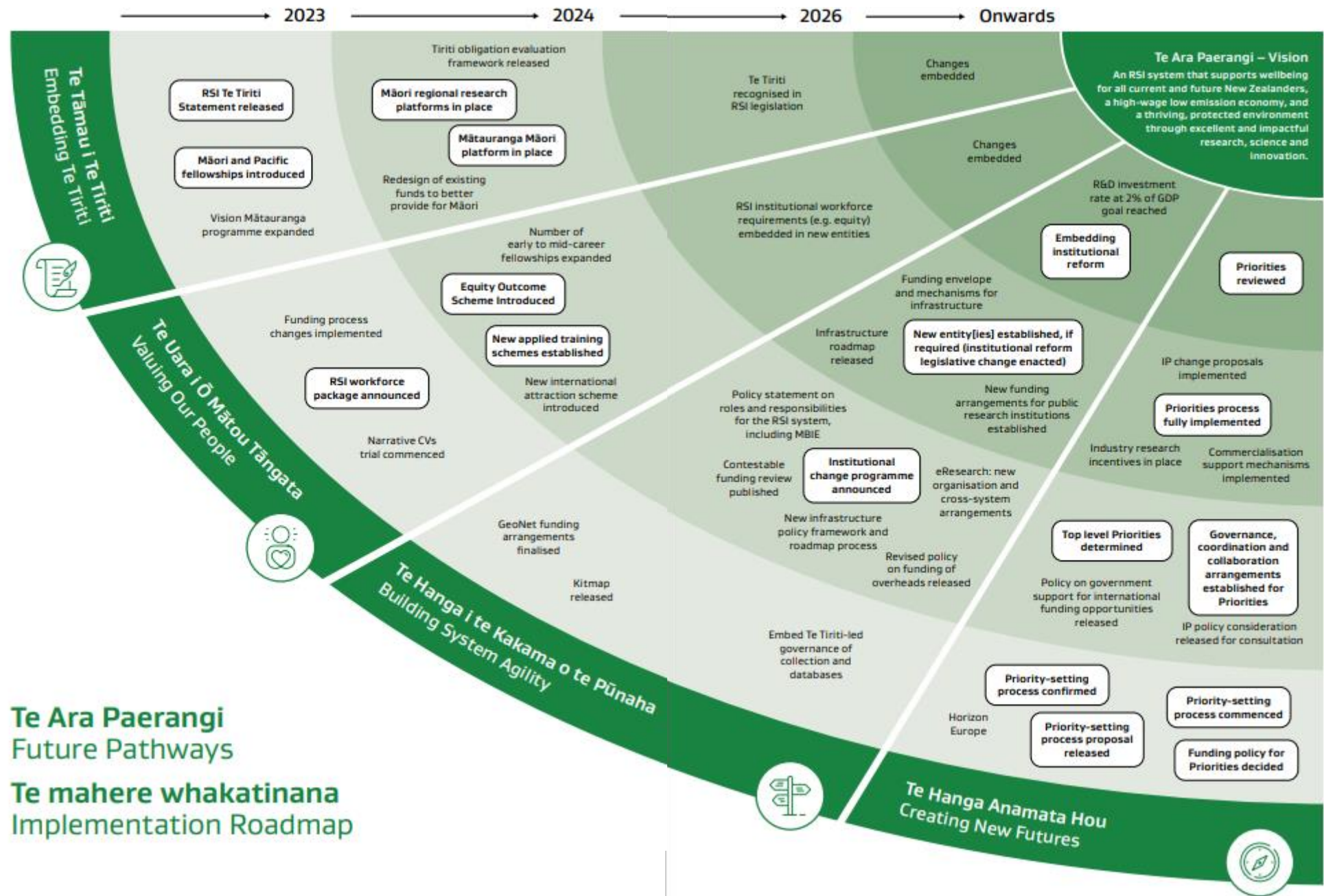
Future state

- RSI system makes a meaningful impact on the wellbeing of New Zealanders
- The system delivers on Research Priorities of national significance
- The system gives full expression to Te Tiriti and is responsive to the needs and values of Māori
- The system attracts and retains a talented and diverse workforce
- Institutions are resilient and adaptable in a changing environment

Reform Vision and Objectives

An RSI system that supports wellbeing for all current and future New Zealanders; a high-wage low-emissions economy; and a thriving, protected environment through excellent and impactful research





Embedding Te Tiriti

- The statement outlines how the Te Ara Paerangi – Future Pathways programme will honour government Tiriti obligations and give life to Tiriti opportunities in RSI
 - The statement
 - describes the **aspiration** being sought by Embedding Te Tiriti in Te Ara Paerangi – Future Pathways
 - provides the basis for how Te Ara Paerangi – Future Pathways can contribute to government Tiriti **obligations** in the RSI system
 - guides MBIE **expectations** as a steward, funder, and administrator of RSI.
 - To be released late August – early September
-

Valuing Our People – initial investments

- A **fit-for purpose fellowships scheme** will be introduced from 2024:
 - will develop around **300 future leaders of RSI over the next 10 years**
 - **value of awards will be increased** to better reflect current sector salaries and the cost to host institutions of supporting fellows
 - lengths of the awards will better promote career development.
 - the new scheme will replace the Rutherford Foundation, Rutherford Discovery and James Cook Fellowships.
- **Ngā Puanga Pūtaiao Fellowships** – will open later this year to provide opportunities for early-to-mid-career Māori and Pacific peoples researchers while new fellowships schemes are rolled out.
- **Applied doctorates** (often called 'industry PhDs' overseas) – developing a scheme to train researchers to generate greater research impact in the wider economy.

Work on these initiatives builds on insights from the MBIE workforce surveys last year.

Building System Agility

We are looking across the reforms as a whole and:

- **Reviewing and assessing existing levers** to better understand their effectiveness in the current system and future system, i.e., how these can be used to direct the RSI system to achieve Te Ara Paerangi objectives.
 - **We are preparing to clarify roles, responsibilities and relationships of government regarding RSI** by engaging with other government agencies to
 - develop a shared understanding of the contexts we operate in (i.e., the multiple roles of government)
 - come to a shared view and agreement on responsibilities, and
 - clarify what science services & research government needs and improve government's ability to be a consumer of RSI
-

Wellington Science City

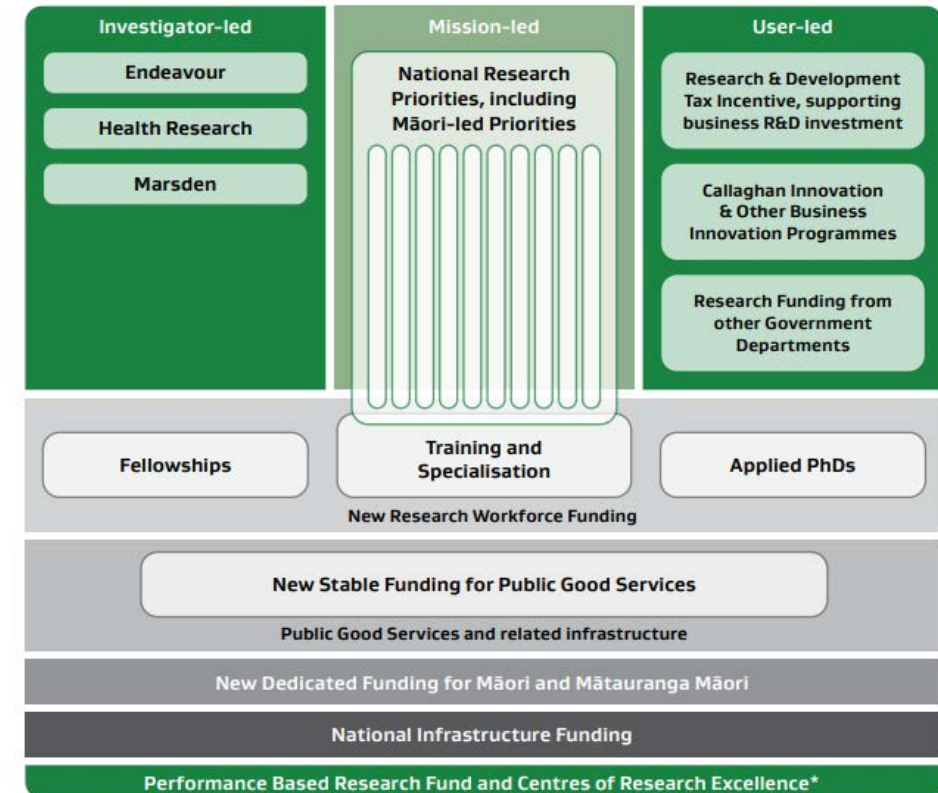
- Wellington Science City will benefit Aotearoa New Zealand by creating opportunities to build connections, capability and career pathways across the research, science and innovation system.
 - Government announced a \$451 million investment for the construction of Wellington Science City - the Government's largest ever capital investment in science infrastructure.
 - The Wellington Science City proposal will see development of three new multi-institution research and innovation hubs to complement existing infrastructure:
 - Health and wellbeing corridor from Kelburn to Newtown, including a new pandemic research and response institute.
 - National centre for oceans, climate and hazards research at Greta Point.
 - Research, technology and innovation park in Gracefield, Lower Hutt.
 - We will need input from stakeholders as we go forward with the work
 - More information is available at www.mbie.govt.nz/wellington-science-city
-

Creating New Futures

National Research Priorities

- Enable the government to focus funding for research and impact activities on the most important opportunities and challenges for NZ.
- Hubs of collaboration, coordination and capability across the RSI system.

Figure 8 Schematic Representation of our future public RSI system funding and activities.



*Funding administered by the TEC to eligible education organisations to support research activity and research-led teaching.
Not to scale.

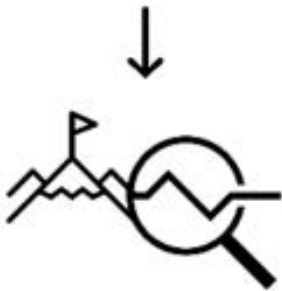
National Research Priorities Framework



Priorities

Missions for New Zealand that research, science and innovation can help address.

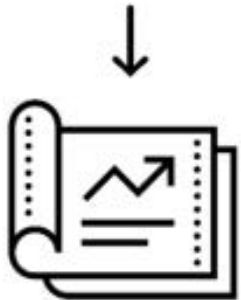
Example: “Carbon Zero by 2050”



Research outcomes

Research outcomes that will help the research, science and innovation sector meet each mission.

Example: “Carbon capture through native forests”



Research activities

Specific research activities that contribute to delivering each research outcome.

Example: “Modelling carbon uptake by a lowland forest region”



Horizon Europe Association

- New Zealand is the first non-European country to associate to the world's largest research and innovation programme, Horizon Europe, €95 billion (NZD\$160 billion)
- Association will help to grow our global connectivity, which is a key aim of 'Creating new futures'
- New Zealand researchers and organisations can take part in the programme on an equal footing with their European counterparts including leading research programmes and receiving funding.
- MBIE have established a top-up fund to ensure that our research organisations can participate without a significant shortfall in overhead costs.
- We have appointed a network of National Contact Points to support our research community to engage with the programme.
- More information can be found on the MBIE Horizon Europe webpage
- [Horizon Europe | Ministry of Business, Innovation & Employment \(mbie.govt.nz\)](https://www.mbie.govt.nz/horizon-europe)



Q&A

Questions submitted via Q&A tab



How to stay involved

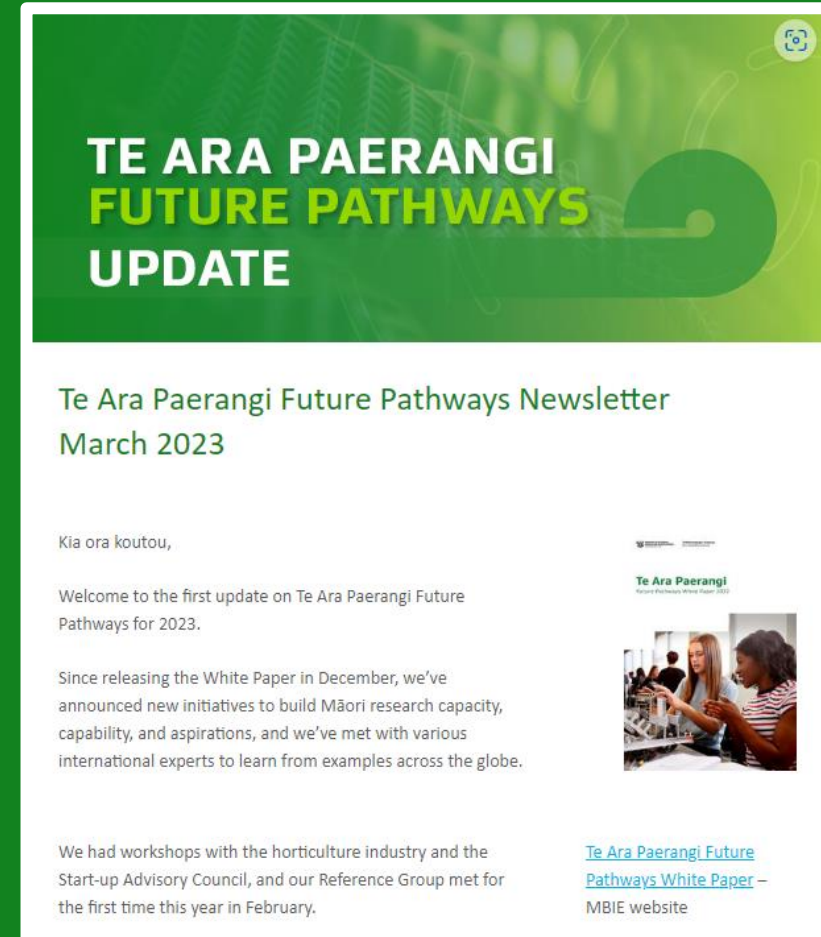
You can stay connected with Te Ara Paerangi-Future pathways via the MBIE website where you can join our email list to receive updates and subscribe to our newsletter to learn more and get involved.

You can contact us at:

www.mbie.govt.nz/te-ara-Paerangi-future-pathways

futurepathways@mbie.govt.nz

[@MBIEsci](https://twitter.com/MBIEsci) – MBIE Science on Twitter



Closing karakia

Contact us

Ministry of Business, Innovation & Employment

15 Stout Street, PO Box 1473,

Wellington 6140, New Zealand.

futurepathways@mbie.govt.nz

www.mbie.govt.nz/te-ara-Paerangi-future-pathways